

Incredible 500W+ TDP

LIQTECH **OC** TR4

ALL-IN-ONE LIQUID CPU COOLER



*Incredible 500W+ TDP
Over-clocking Support*



ELC-LTTR360-TBP



ELC-LTTR240-TBP

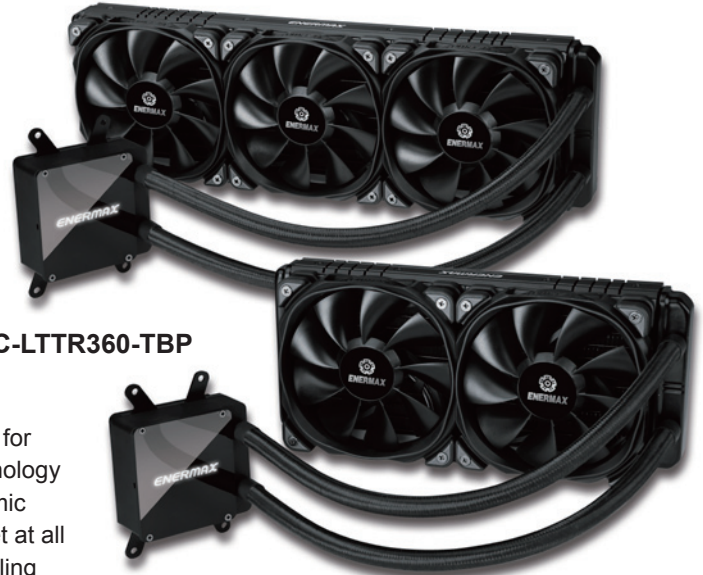
Incredible 500W+ TDP

LIQTECH



ALL-IN-ONE LIQUID CPU COOLER

- 100% sTR4 IHS Coverage
- Exclusive for AMD sTR4 Platform
- Support 500W+ TDP
- Patented Shunt Channel Technology
- For High-end, Overclocked CPUs



ELC-LTTR360-TBP

ELC-LTTR240-TBP

ENERMAX LIQTECH TR4 series is especially engineered for AMD SocketTR4, featuring patented Shunt Channel Technology (SCT), high pressure PWM fans, and high-efficiency ceramic nano PI bearing pump to keep your systems cool and quiet at all times. LIQTECH TR4 lineup offers unbeatable 500W+ cooling capacity; this liquid cooling innovation is definitely a perfect choice for high-end, overclocked CPUs.

Features

AMD SocketTR4 Ready!

Quick & user-friendly mounting system for the latest AMD (TR4) Threadripper CPU.

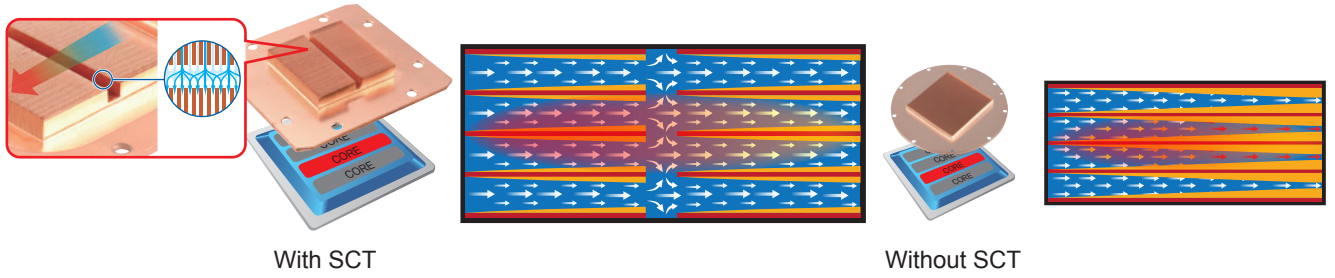


100% sTR4 IHS Coverage

Tailored to 100% cover AMD Threadripper's integrated heat spreader (IHS) for uncompromised cooling performance.

Patented Shunt-Channel-Technology (SCT) boosts thermal conductivity and eliminates any heat surge

ENERMAX patented SCT (Shunt-Channel-Technology) design enables the cold plate to eliminate the "Boundary Layer" to increase coolant flow momentum and accelerate heat transfer performance. The SCT also lets heated and non-heated coolant to swap the channel and increase utilization rate.

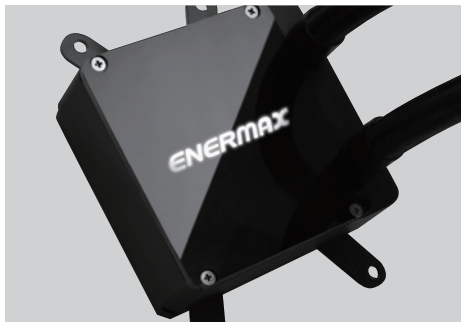
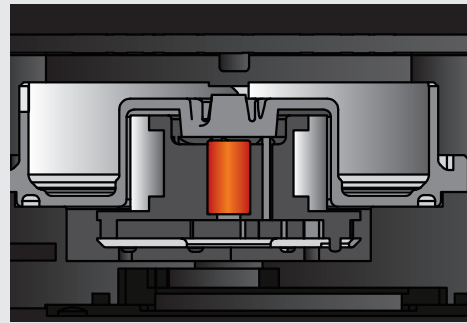


With SCT

Without SCT

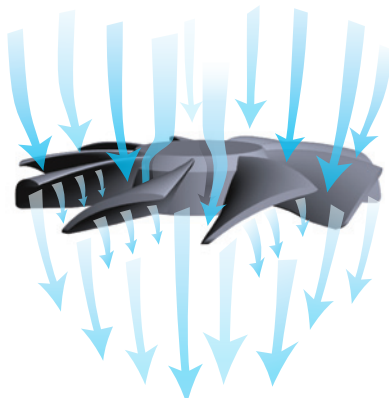
Powerful pump design

Robust pump with precision engineering delivers high flow rate up to 450 L/h for superior cooling performance.



Luminous LED logo as power-on indicator

Anti-vibration rubber pads provide noiseless stable operation



Innovative High Pressure Blades

Hi-pressure blade design enhances the cooling performance.

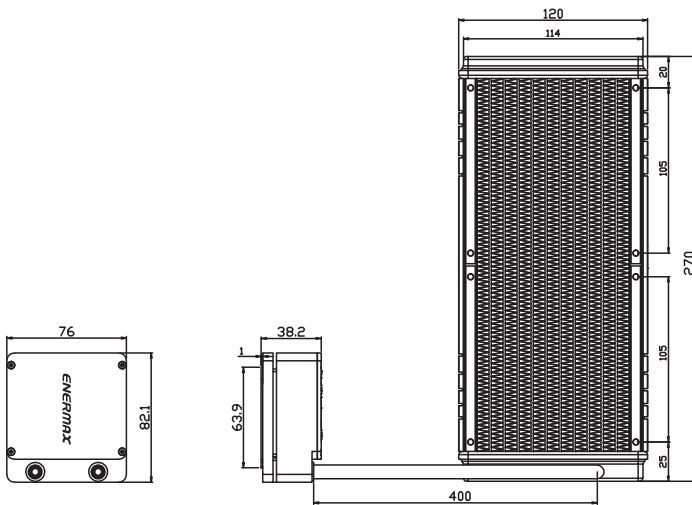
▶ Premium 400mm weaved tubing is perfect for mainstream system builds

▶ Flexible polyamide (PA) rubber tubes ensure zero permeability

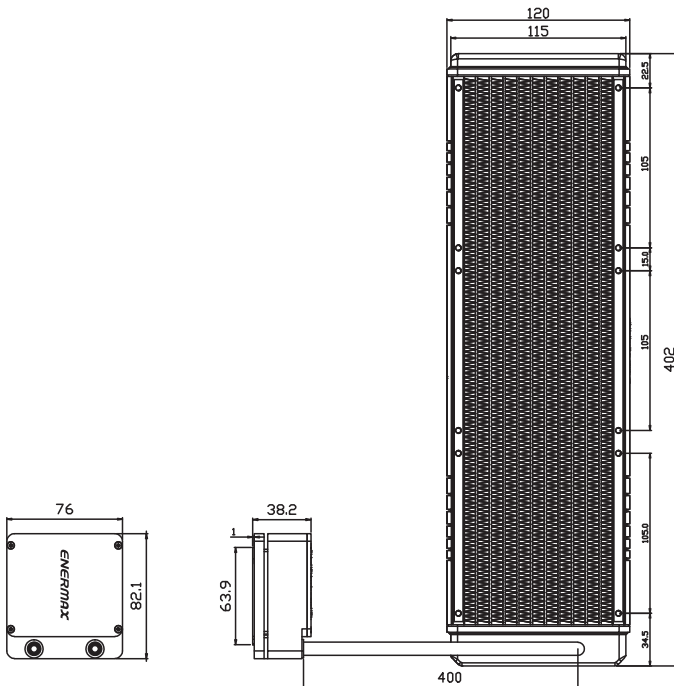


Dimensions

unit:mm



LIQTECH ²⁴⁰ **OC** **TR4**
ELC-LTTR240-TBP



LIQTECH ³⁶⁰ **OC** **TR4**
ELC-LTTR360-TBP

Specifications

Model		ELC-LTTR240-TBP	ELC - LTTR360-TBP
Cold Plate	Material	Copper	
Pump	Bearing	Ceramic nano PI bearing	
	MTBF	100,000 hours	
	Motor Speed	3000 RPM	
	Rated Voltage	12 V	
	Rated Current	0.4 A	
Radiator	Dimension	270 x 120 x 39 mm	402 x 120 x 28 mm
	Material	Aluminum	
Tube	Material	Polyamide (PA) rubber tube	
	Length	400 mm	
Weight (w/o fan)		1100 g	1395 g
Bracket	Compatibility	AMD® TR4 / SP3	
Fan	Dimension	120 x 120 x 25 mm	
	Bearing	Twister Bearing	
	MTBF	≥ 160,000 hours	
	Speed	500 - 2300 RPM	
	Rated Voltage	12 V	
	Rated Current	0.3 A	
	Air Flow	23.81 ~ 102.17 CFM 40.45 ~ 173.59 m³/h	
	Static Pressure	0.673 ~ 6.28 mm - H ₂ O	
	Noise Level	14 ~ 28 dBA	
	Connector	4 pin PWM	
Warranty		2 years	

Shipping Information		
Model	ELC-LTTR240-TBP	ELC-LTTR360-TBP
Barcode	EAN: 4713157723352 UPC: 819315023358	EAN: 4713157723369 UPC: 819315023365
Box dimension	465 x 235 x 165 mm	465 x 235 x 165 mm
Gross weight / unit	2.03 kg	2.49 kg
Carton dimension	525 x 480 x 500 mm	525 x 480 x 500 mm
Qty / carton	6	6
Gross weight / carton	14.13 kg	16.89 kg