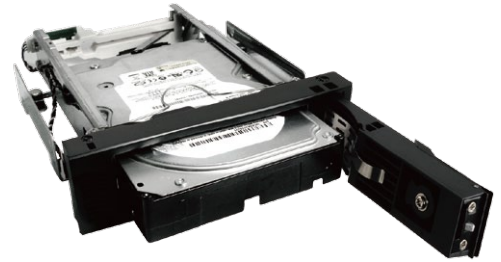
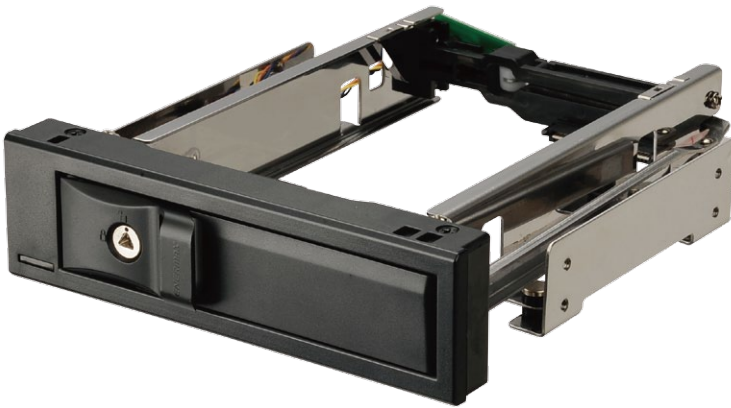


EMK5101

SINGLE 3.5" MOBILE RACK

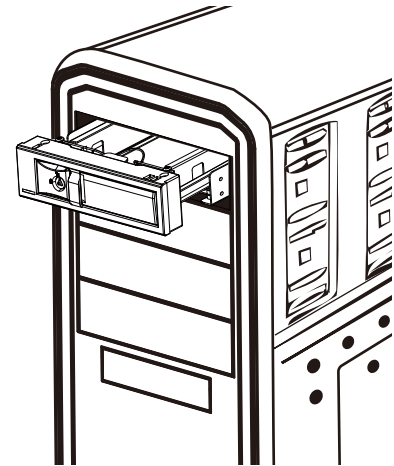


Easy drive plug-in and ejection mechanism



Features

- Patented NSS (Non-scratch SATA) connector
- Golden finger with loose-cable preventive design
- Both SATA & SAS HDD compatible
- 50,000 times HDD plug-in and ejection durability guaranteed
- SATA 6.0G (SATA III) hard drives compatible
- 3.5" internal hot swap rack
- Easy drive plug-in and ejection mechanism
- Steel clip on SATA data connector to avoid cable removal
- Brackets with shock absorption mechanism
- Sturdy structure in stainless steel frame
- Security key locks
- Patented power LED cable management:
removes the need for additional cable that connects to the motherboard
- Dual color LED indicator



5.25" drive bay designed for a single 3.5" HDD

Specifications

EMK5101

Drive Fit	3.5" SATA I,II,III & SAS HDD
Drive Bay	5.25" bay
Material	Plastic ABS & Stainless Steel
LED	Blue LED for power, orange LED for activity
Patent Power + LED cable	Yes
Hot Swap support	Yes
Key lock	Yes
Dimension	185 x 148 x 42 mm
Product weight	305 g
Working Environment	0 ~ 50°C
Operating System	Windows XP/Vista/7/8 ; Mac OS 9.0 or higher
Accessory	Screw x 4 ; SATA cable ; power cable ; key x 1