

EB308S-B / EB308U3-B



**BRICK**  
Aluminum HDD Enclosure

## 3.5" HDD Enclosure

### Features

#### Secure Data Safe

Solid case made from brushed aluminium with bright, dual-mode status indicator (On = Power / Flash = Access).

#### Quick Data Transfer

Depending on interface and model up to 5 Gb/sec (EB308U3-B with USB 3.0).

#### Optimal Cooling

Efficient heat dissipation due to the front air vents and the thermally conductive material of the case.

#### Energy-Saving

If unused, the HDD can be switched off with the integrated On/Off switch.

#### Plug & Play

Instant access without inconvenient driver installation.

#### Immediately ready for use

Screw driver included.

#### Desktop Stand

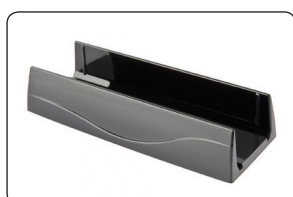
Stand with rubber pads for desktop use.

### Specifications

Model	EB308S-B	EB308U3-B
Internal Interface	3.5" SATA I&II	3.5" SATA I&II
External Interface	USB 2.0	USB 3.0 & USB 2.0
Data Transfer Rate	Up to 480Mb/sec	up to 5Gb/sec (USB 3.0) up to 480Mb/sec (USB 2.0)
HDD Support	4,500 - 10,000RPM	
Max. Memory Capacity	2 TB	3 TB
Max. Disk Height	26.10mm	
Material	Brushed Aluminium & plastic	
Colour	Black	
Power Source	External power adapter with universal auto-switching (100-240V)	
Status LED (Power/Access)	Blue LED (on/flash)	
OS Support	Windows 2000 / XP / Vista / 7 Mac OS 9.2 or higher	
Dimensions (mm)	D 200 x W 109 x H 31	
Weight	238g (only enclosure)	



On/Off power switch and dual-mode status indicator (Power/Access)



Stand for desktop use



Front air vents



Screw driver included