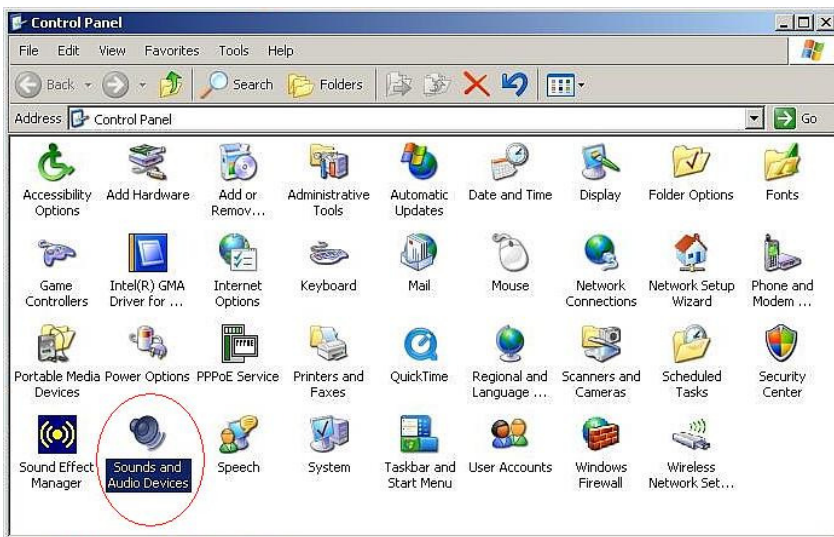


Read Me First!

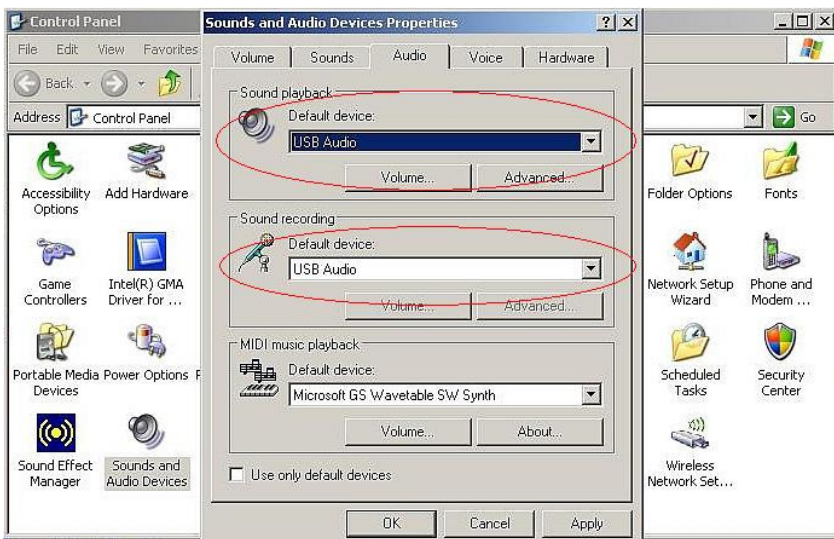
Enermax KB005U and KB007U come with a built-in audio chip to transfer the audio I/O signal from your PC to the keyboard. Your PC will take it as a "USB Audio Device" when you connect the keyboard for the first time. Since the priority of audio I/O (controlled by M/B and OS) is "USB Audio first", your PC audio will only be available through your new keyboard (the default audio device). You can simply change the default audio device by using the following steps:

"Control panel" → "Sounds and Audio Devices Properties" → "Audio" → "Sound Playback/Sound recording" → "Default Device".

1. "Control panel" → "Sounds and Audio Devices Properties"



2. "Sounds and Audio Devices Properties" → "Audio" → "Sound Playback/Sound recording" → "Default Device".



Note : Please restart your sound playback/recording software after changing the default device setting.