

1. Removing the side panel

Release the screws and remove the side panel



2. Removing the front panel

- Remove two side panels and open front I/O cover
- Flip two side latches in the back to remove the front panel



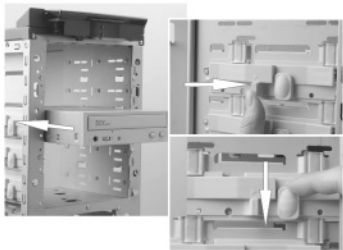
3. CD-ROM/DVD-ROM installation for the first and second 5.25" drive bays

Slide CD-ROM/ DVD-ROM into the 5.25" drive bay and fasten with screws



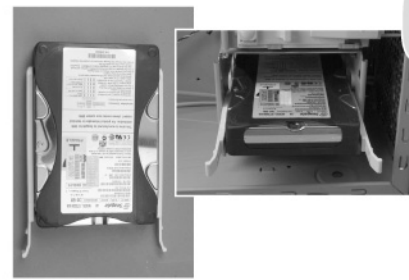
4. 5.25" device installation for the third, fourth and fifth 5.25" drive bays

- Slide 5.25" device into the 5.25" drive bay
- Push the rail to the right and push the lock down



5. Floppy installation

- Slide floppy into the drive bay
- Push the rail to the right and push the lock down



6. 3.5" HDD installation

- Attach the rails to two sides
- Slide HDD into the drive cage



7. PCI slot operation

Press the clip and take out the slot

8. Cables connection description

Function	PIN's Mark	Signal Description
AUDIO	AUDIO	AC' 97 Audio connector
	MIC-IN	Front Panel Microphone input signal
	MIC-POWER	Microphone Power
	GROUND	GROUND
AC' 97 AUDIO	R-OUT	Right Channel Audio signal to Front Panel
	L-OUT	Left Channel Audio signal to Front Panel
		Right Channel Audio signal Return from Front Panel
		Left Channel Audio signal return from Front Panel
USB	USB	USB Connector
SATA	SATA	Serial ATA interface Connector

9. Suggested height of CPU cooler and length of VGA card

- Height of CPU cooler: 145mm for monster fan side panel (ECA3052)
- Length of VGA card: 270mm

